

# Kirby Morgan 77 Helmet

## P/N 500-090 / 500-091

Location #	Part #	Description
1	510-575	Nose Block Pad
2	545-015	Nose Block Device <i>Includes location #1</i>
3	520-020	Valve Body
4	510-550	Valve, Oral Nasal
5	510-743	Oral Nasal Mask
6	530-058	Screw
7	330-405	Washer
8	540-569	Handle, Helmet
9	530-059	Screw
10	510-795	Grip, Handle
11	430-075	Washer
12	530-052	Screw
13	505-759	Handle Assembly
14	560-517	Helmet Shell, Stainless Steel
15	505-753	Airtrain Assembly, Stainless Helmet
16	550-571	Sleeve
17	530-083	Screw
18	550-574	Sleeve
19	530-535	Washer
20	530-415	Washer
21	530-317	Nut
22	530-059	Screw
23	550-566	Adapter
24	530-052	Screw
25	550-062	Knob, Nose Block
26	555-180	Packing Nut, Nose Block
27	510-008	O-ring
28	540-563	Port Retainer
29	505-738	Port Retainer Assembly
30	510-010	O-ring
31	520-004	Face Port
32	510-260	O-ring, View Port
33	550-097	Large Port Plug Body
34	510-029	O-ring
35	510-481	O-ring
36	550-043	Plug
37	320-026	Comm. Mount Nut
38	505-089	Large Port Plug Assembly <i>Includes location #s 33-37</i>
39	550-372	Regulator Mount Nut
40	510-741	Valve, Water Dump
41	320-040	Regulator Mount Washer
42	530-145	Lock Nut
43	530-527	Washer
44	510-403	Gasket, Pod
45	560-516	Regulator Mount Pod
46	430-134	Washer

Location #	Part #	Description
47	530-089	Screw
48	530-086	Screw
49	505-278	REX Regulator Assembly <i>Purchase 525-774</i>
50	560-300	Zinc Whisker Anode
51	540-015	Kidney Plate (pre 2013)
52	550-586	Spacer, Whisker
53	530-070	Screw
54	530-145	Lock Nut
55	530-086	Screw
56	530-032	Screw
57	530-035	Screw
58	530-546	Washer for Swing Catch
59	550-061	Spacer
60	540-086	Swing Catch
61	520-167	Teflon® Washer for Swing Catch
62	535-825	Spring, Swing Catch
63	550-122	Spring Spacer
64	530-045	Screw
65	505-748	Chin Strap Assembly with Snaps
66	530-028	Lock Nut
67	505-755	Locking Collar Assembly, S.S.
68	530-027	Hinge Bolt
69	520-165	Washer
70	530-545	Washer
71	505-746	Neck Ring Assembly, Medium, S.S.
72	530-037	Screw
73	505-742	Earphone Retainer Assembly
74	505-740	Snap Tab Assembly, S.S.
75	505-110	Sealed Pull Pin Assembly
76	530-059	Screw
77	540-039	Front Stand Off
78	525-116	Front Stand Off Kit <i>(2 each of Loc. # 76 and 77)</i>
79	530-015	Screw
80	320-026	Comm. Mount Nut
81	515-018	Earphone, Right, 9"
82	515-019	Earphone, Left, 15.5"
83	515-029	Microphone Assembly
84	515-024	Comm. Assembly w/MWP
85	515-023	Comm. Assembly w/Posts
86	505-732	Side block Assembly
87	520-033	O-ring, Teflon®
88	555-172	KM 77 Bent Tube Assembly
89	510-012	O-ring
90	555-173	KM 77 Bent Tube Assembly w/O-rings
91	520-038	Tie Wrap

Location #	Part #	Description
92	560-304	Zinc Sleeve Anode
93	510-683	Chin Cushion Assembly
	510-639	Chin Cushion Bag
94	510-837	Head Cushion Foam Spacer Assembly <i>(Order P/N 525-745)</i>
	510-836	Head Cushion Foam Spacer Bag
95	510-754	Head Cushion Assembly
	510-722	Head Cushion Bag

**⚠ CAUTION**

**Use only Kirby Morgan original replacement parts. The use of other manufacturers' parts will interfere with the performance characteristics of your life support equipment and may jeopardize your safety. Additionally, any substitutions will void any warranties offered by KMDSI. When ordering spares, always insist on Kirby Morgan original parts.**

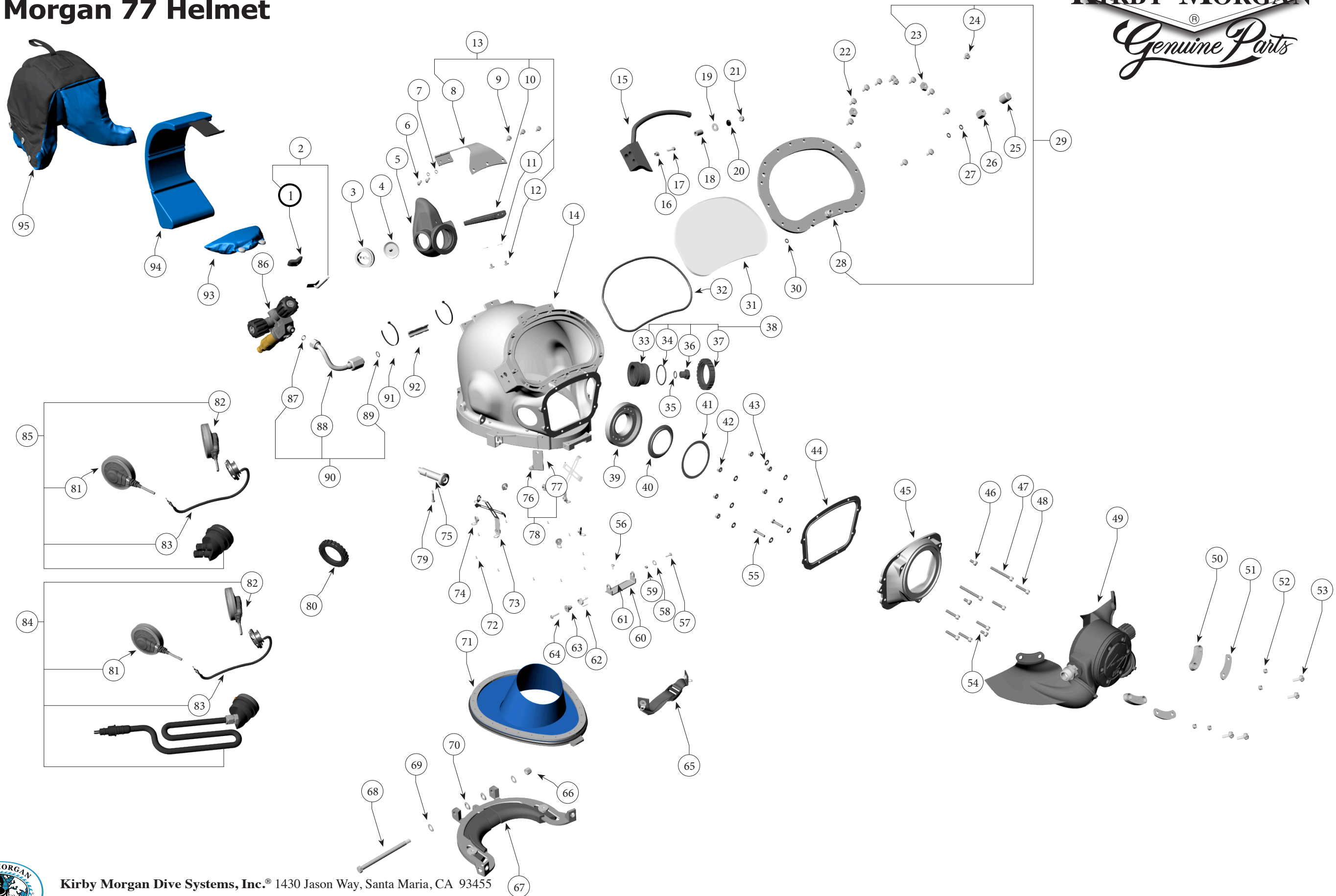


Kirby Morgan Dive Systems, Inc.® 1430 Jason Way, Santa Maria, CA 93455

Phone: 805/928-7772 Fax: 805/928-0342

[www.KirbyMorgan.com](http://www.KirbyMorgan.com) e-mail: [kmdsi@KirbyMorgan.com](mailto:kmdsi@KirbyMorgan.com)

# Kirby Morgan 77 Helmet



Kirby Morgan Dive Systems, Inc.® 1430 Jason Way, Santa Maria, CA 93455

Phone: 805/928-7772 Fax: 805/928-0342

[www.KirbyMorgan.com](http://www.KirbyMorgan.com) e-mail: [kmdsi@KirbyMorgan.com](mailto:kmdsi@KirbyMorgan.com)